

QUALITY ENGINEERING & SERVICES W.L.L

(A DIVISION OF QUALITY GROUP OF COMPANIES)
ISO 9001 : 2008 CERTIFIED COMPANY

COMPANY PROFILE



FABRICATION, MACHINING, METAL CASTING,
LOAD TESTING, SAND BLASTING & PAINTING,
TRANSPORTATION



P.O. BOX NO. 9130
STREET NO. 25, GATE NO. 91
INDUSTRIAL AREA, DOHA - QATAR
TEL : 44500701 , 44506898 , 44506960
FAX: 44506195 DOHA - QATAR
Email: gesqatar@gmail.com

SGS

Certificate AE09/2067

The management system of

Quality Engineering & Services W.L.L

P.O. Box No. 9130, Doha, Qatar.



has been assessed and certified as meeting the requirements of

ISO 9001:2008

For the following activities

Design, fabricate/machining of Steel products and erection /Installation.

Further clarifications regarding the scope of this certificate and the applicability of (ISO-9001:2008) requirements may be obtained by consulting the organisation

This certificate is valid from 17th May 2009 until 17th May 2012 and remains valid subject to satisfactory surveillance audits.

Re certification audit due before 09th April 2012

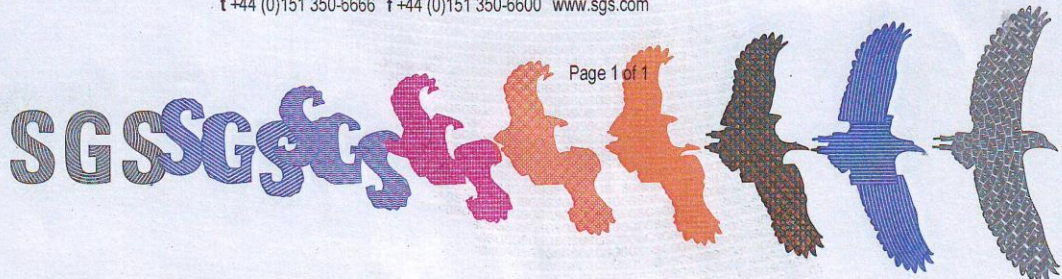
Issue 1. Certified since 17th May 2009.

Authorised by



SGS United Kingdom Ltd Systems & Services Certification
Rossmore Business Park Ellesmere Port Cheshire CH65 3EN UK
t +44 (0)151 350-6666 f +44 (0)151 350-6600 www.sgs.com

Page 1 of 1





QUALITY SYSTEM MANUAL

Doc. No : QES-QSM-J

Rev. No : 00

Rev. Date :

Quality Policy

Page No : 1 of 2

Quality Policy

QES is committed to offer steel fabricated /machined products to our esteemed Customers, by providing precise and accurate dimensional products, through adoption of Quality System Standards, meeting with customer/other applicable safety requirements, to achieve customer contentment throughout our existence and upgrade our systems from time to time, such that we possess and use current technology all the time and thereby carve out our market share, without losing it to a competitor.

Approved by Managing Director

Place: DOHA, QATAR

Signature:

Dated, 1st October, 2008.



QUALITY SYSTEM MANUAL

Doc. No : QES-QSM-J

Rev. No : 00

Rev. Date :

HSE POLICY

Page No : 2 of 2

HSE Policy

We are committed to a health, safety and environment management system that conforms to the best practices of our industry. Health, Safety and environment consideration are a top priority in planning and development of product, services and processes. We acknowledge the principle that all accidents can be prevented and actively promote the high standards of safety awareness and performance.

- 1.1 Management accepts the responsibility for leadership of the health, safety and environment program, for its effectiveness and improvement.
- 1.2 Supervisors are responsible locally for ensuring that all operations are performed with the utmost regard for the health and safety of personnel and protection of the environment.
- 1.3 All employees are responsible for wholehearted, genuine cooperation with every aspect of the health, safety and environmental program. This includes compliance with all rules and regulations and continuous, safe, environmentally responsible job performance.

Approved by Managing Director

Place: DOHA, QATAR

Signature:

Dated.1st October.2008.

Table of Contents

Company Summary

1. Introduction
2. Our Mission
3. Our Service Departments
 - 3.1 Fabrication Shop
 - 3.2 Machine Shop
 - 3.3 Load Testing & Certification
 - 3.4 Office Containers & Portacabins
 - 3.5 Metal Casting
 - 3.6 Sand blasting & Painting
 - 3.7 Aluminum & Stainless Steel Fabrication
 - 3.8 Other Services
 - 3.8.1 - Trading
 - 3.8.2 - Transportation
4. Management System

Company Summary

Name of the Company : **Quality Engineering & Services W.L.L**

Year of Establishment : 2006

Registration Number : 25999/1

Telephone Number : 44500701, 44506960, 44506896

Fax Number : 44506195

Email : info@qesqatar.com
qesqatar@gmail.com

Address : Street No. 25 , Gate No. 91
Industrial Area, Doha - Qatar

P.O.Box No. : 9130

Activities : Steel Fabrication
Aluminum & Stainless Steel Fabrication
Machining
Metal Casting
Load Testing
Sand blasting & Painting
Transportation

1. Introduction

Quality Engineering & Services W.L.L was inaugurated as the fourth division of quality group of companies. Since its inception Quality Engineering & Services is playing a major role in the booming industrial and construction fields in Qatar. We are primarily engaged in fabrication & installation of steel structures and steel related products, services, machining jobs, Sand blasting & painting works, aluminum works and load testing services with certification (by third party).

We believe in long term and prosperous relationship with all stakeholders viz. our valued customers, suppliers, clients & partners. Within few years of experience QES has cultivated the ability to respond quickly to the needs of the market and customers. QES is committed to pursuing the strategy of providing customized products and services to meet specific and changing needs.

2. Our Mission

To become the leading firm in the steel fabrication industry by excelling in product quality, timely delivery, overall customer satisfaction, range of products and by maintaining highest standards of business conduct.

3. Our Services Departments

3.1 Fabrication Shop

We undertake all types of steel fabrication works like industrial and general structural steel works, ware houses, offshore baskets, skip bins, spreader beams, various types of tanks, cylinder racks with manifolds, Port a cabins, car parking sheds, Container houses, handrails, steel door, stairs and cat walks and all kinds of customized fabrication as per design and customer's need.

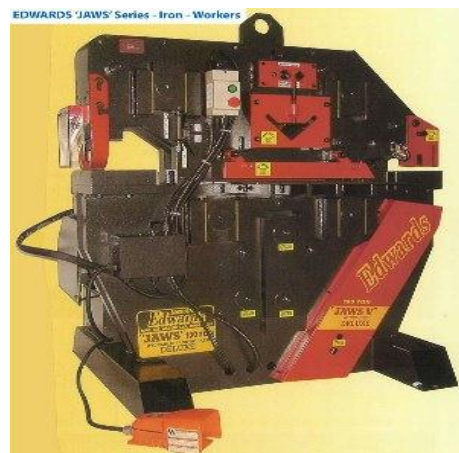


We have more than 7000 sq mtrs of yard in Sanaiya industrial area. We are equipped with Rolling machine (plate & pipe), Press Breaker, Power Press, Drum cutting, Shearing, Bending and Iron Worker, Welding machines (electric, arc, tig & mig) / generators, Lathe machines, drilling machines (stand, portable, magnetic), grinding units, cutting units (gas & motorized) and all types of pneumatic, electric and hand tools.

3.2 Machine Shop

We undertake all types of milling, boring (engine boring and line boring), crank shaft grinding dynamic balancing of agitators and shafts, rolling, bending and cutting works and customized works.

Our machine shop is equipped with machines like general purpose lathes, crank shaft grinding machines, hydraulic press, engine boring machine and all required tools.



3.3 Load Testing and Certification

We do load testing as per QP & MAERSK requirement/ standards of structural items, cargo baskets, cylinder racks lifting beams, cranes, forklifts and containers. Certification is done by third party.

Magnetic particle inspection facility is also available.

Various counter weights are available for hire up to 100 tons.



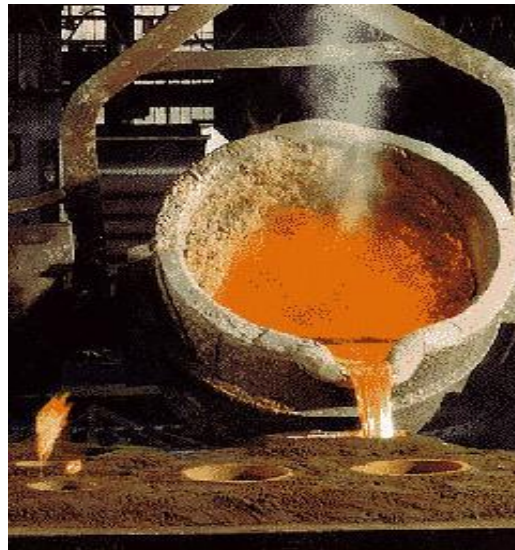
3.4 Office Containers & Portacabins.

We make different types of Porta Cabins, Office Containers, Container Storage Systems and Toilet Containers as per requirements.



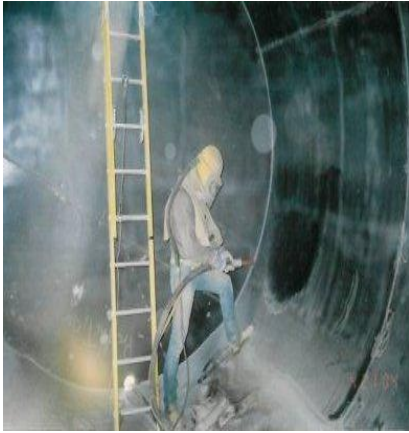
3.5 Metal Casting

We have Metal casting facility for brass, aluminum and steel (Cast Iron). We undertake customized jobs as per client's requirements.



3.6 Sand blasting & Painting

We have more than 2000 sq mtrs of Sand blasting and painting area and we can undertake Sand blasting Painting jobs as per client's specification & requirement.



3.7 Aluminum and Stainless Steel Fabrication

We fabricate aluminum doors, window, curtain walling, cabinet, glass partition etc. We are also equipped to undertake all kinds of stainless steel works like handrails, manifolds, skirtings, claddings, tanks etc. We have well experienced fabricators, S/S and aluminum welders and polishers.



3.8 Other Services

3.8.1. Trading

We supply industrial and construction items, lifting equipments, containers, steel products, wire ropes, slings, hydraulic hoses, hydraulic fittings etc.



3.8.2. Transportation



Our transportation division is equipped with a fleet of trailers, pickups, cranes, forklifts etc.

4 Management System

Under Patronage of Quality group of companies Quality Engineering & Services is managed by qualified & experienced professionals. We have well developed organizational set ups to run the company.

We are ISO 9001:2008 certified company. We believe in development of our workforce and respect them as a core source of organization. We encourage people to take challenges and fight with every obstacle.

THANK YOU